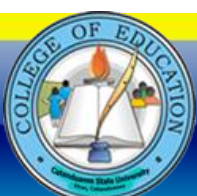


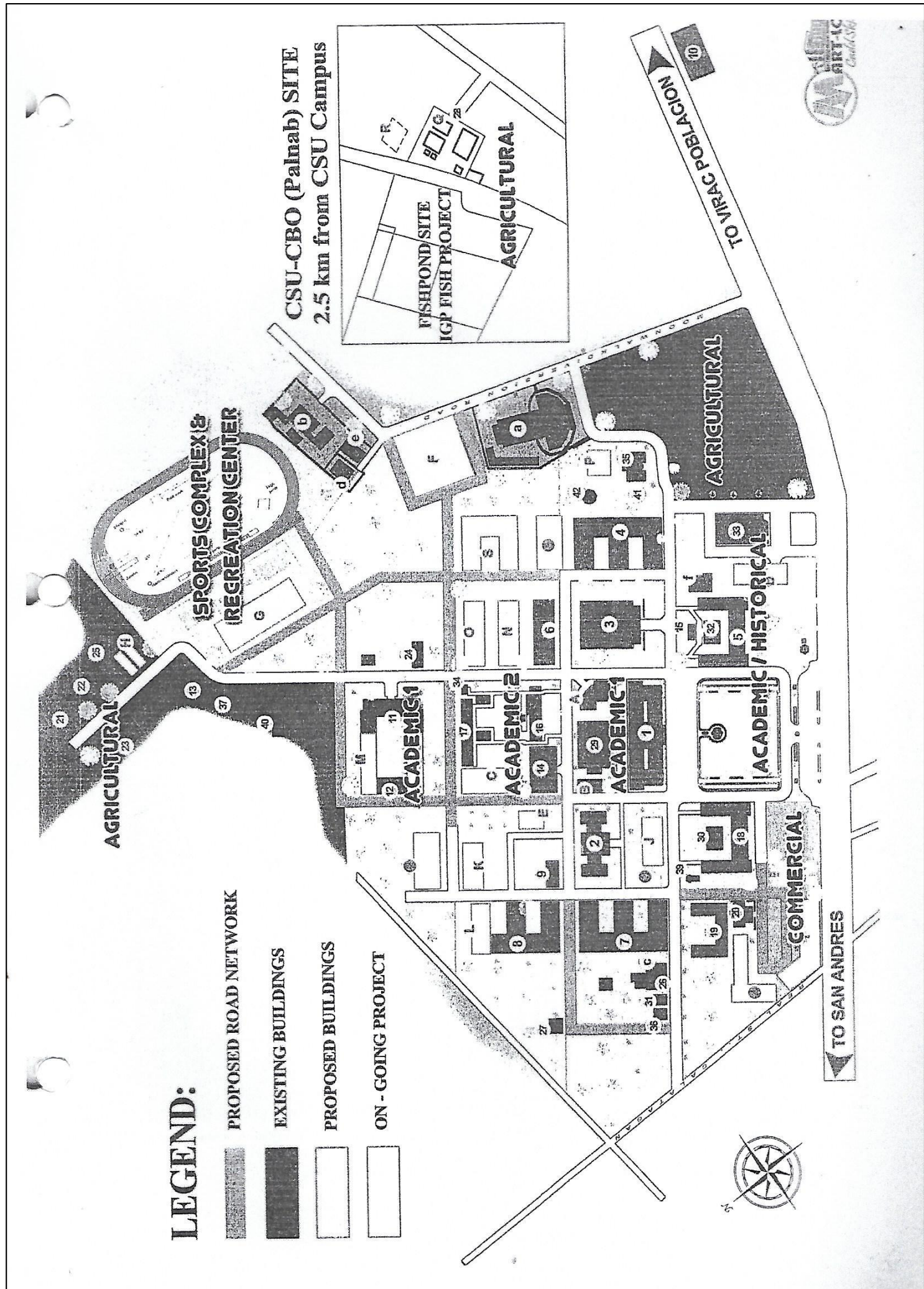


S.1 The layout of the Computer Laboratory, Instructional Laboratories, Research Laboratory, Science Laboratory, Speech Laboratory, and other laboratories in the Institution/College conforms with acceptable standards (RA 6541 National Building Code of the Philippines/PD 856 “Code of Sanitation of the Philippines) and to particular needs of the Graduate Teacher Education program

The Laboratories used by the Master of Arts in Guidance and Counselling conforms to the acceptable standards and to particular needs of the program. The documents that support this claim are the following.

1. **PRESIDENTIAL DECREE (P.D.) NO. 1096 ACCEPTING A NATIONAL BUILDING CODE OF THE PHILIPPINES (NBCP) THEREBY REVISING REPUBLIC ACT NUMBERED SIXTY-FIVE HUNDRED FORTY-ONE (R.A. No. 6541)** that serves as the reference for ensuring that Catanduanes State University College of Information and Communications Technology Building (CICT Building) conforms with the standards as stated on the decree.
2. **SITE DEVELOPMENT PLAN OF THE CATANDUANES STATE UNIVERSITY MAIN CAMPUS** showing the location of the buildings of the institution.
3. **FLOOR PLAN OF THE CATANDUANES STATE UNIVERSITY COLLEGE OF INFORMATION AND COMMUNICATIONS TECHNOLOGY BUILDING SHOWING THE LOCATION OF THE COMPUTER LABORATORY ROOMS AND AUDIO-VISUAL ROOM** that is being utilized by the students of Master of Arts in Guidance and Counselling.
4. **FLOOR PLAN OF THE CATANDUANES STATE UNIVERSITY MAIN LIBRARY SHOWING THE LOCATION OF THE DIFFERENT SECTIONS, LITTLE THEATRE AND INTERNET SERVICES** that is being utilized by the students of Master of Arts in Guidance and Counselling.
5. College of Education Graduate Studies Program has its own Research Office



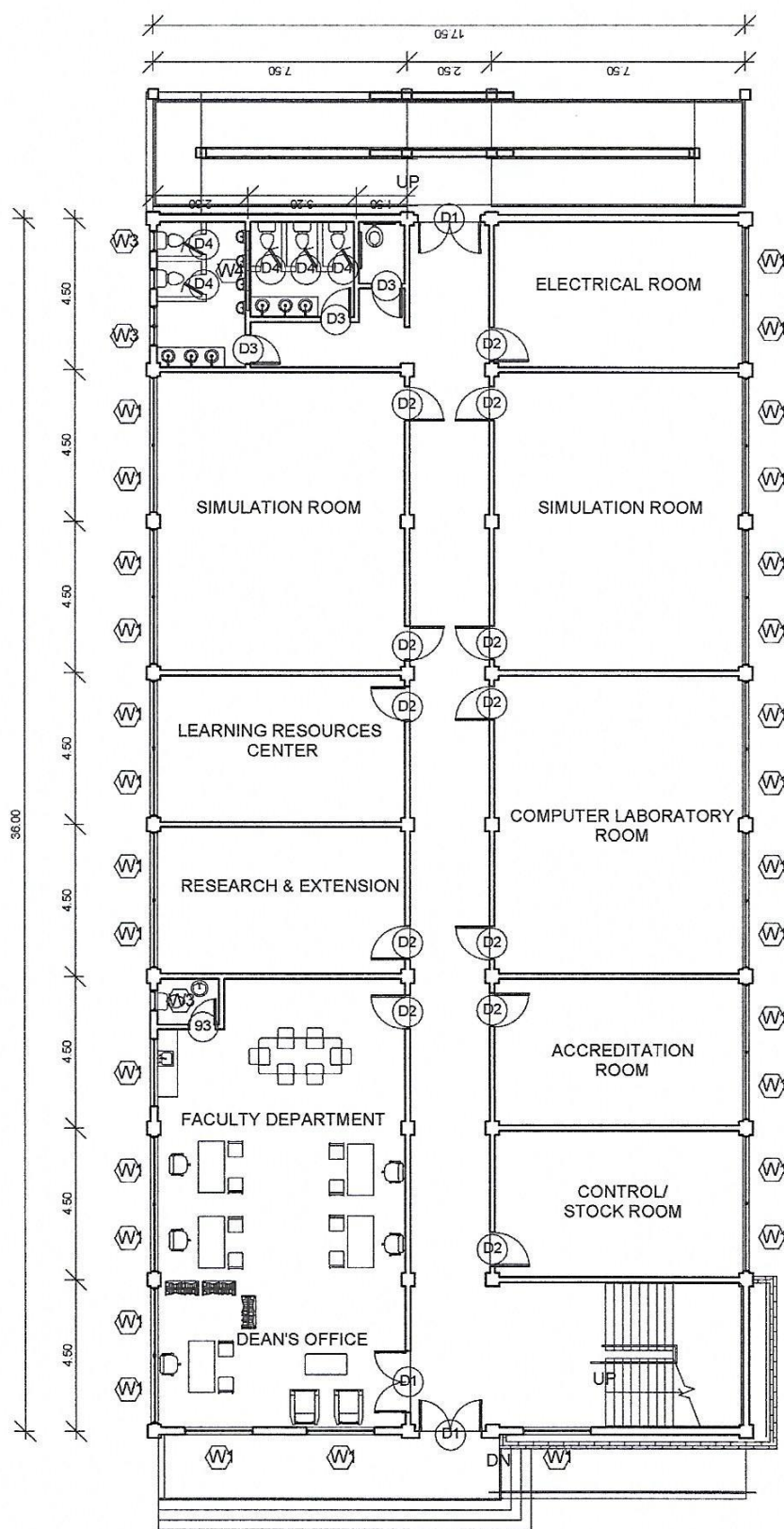


“Leading to mold tomorrow’s noblest”



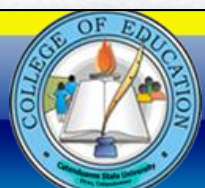
| Project title / Location: | Prepared by: | Checked by: | Recommending Approval: | Approved: | She: |
|---|---|--|--|--|-----------------------------|
| CICT BUILDING <small>CSU, Main Campus, Virac, Catanduanes</small> | GERALD C. MOLINA <small>Member, TPC</small> ENGR. CLARK RICHARD R. UCHI <small>Member, TPC</small> | ENGR. JERILEE G. TADOY <small>Chairman, TPC Director, PDISS</small> | MA. THERESA E. SARMIENTO, MBA <small>VP, ADMINISTRATIVE AND FINANCIAL AFFAIRS</small> | MINERVA I. MORALES, Ed. D. <small>SJC President III</small> | <small>TDRINAIL</small> |

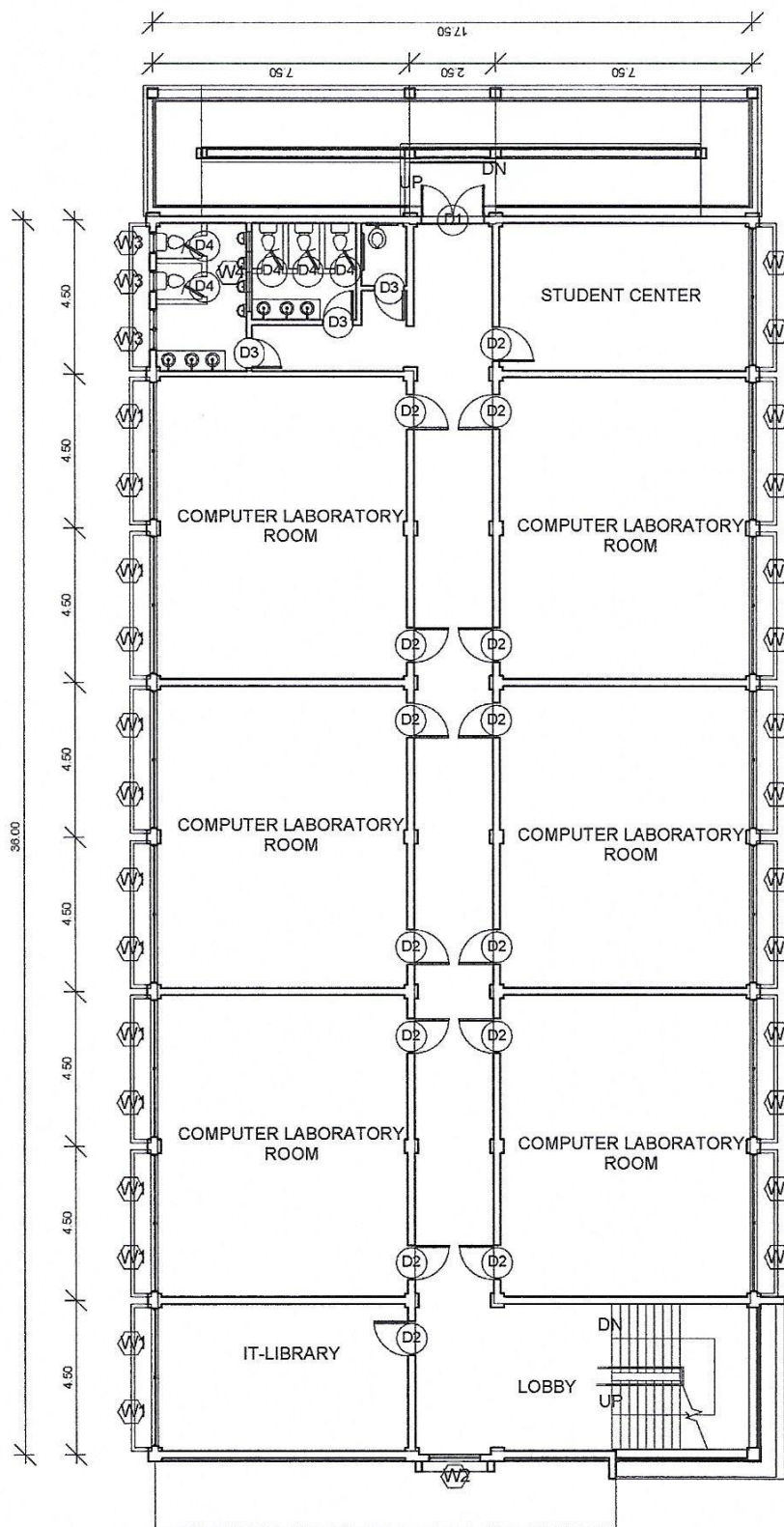




GROUND FLOOR PLAN
 FLOOR AREA: 640.00 m²
 NTS

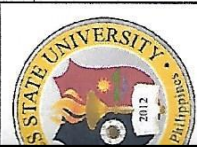
| | | | |
|---------------------------|---|--|---|
| Project title / Location: | CICT BUILDING CSU, Main Campus, Virac, Catanduanes | | |
| Prepared by: | GERALD C. MOLINA Member, TPC | ENGR. CLARK RICHARD R. UCHI Member, TPC | |
| Checked by: | ENGR. JERILFE G. TADOY Chairman, TPC Director, POISS | | |
| Recommending Approval: | MA. THERESA E. SARMIENTO, MBA VP, ADMINISTRATIVE AND FINANCIAL AFFAIRS | | |
| Approved: | | | MINERVA I. MORALES, Ed. D. SJC President III |

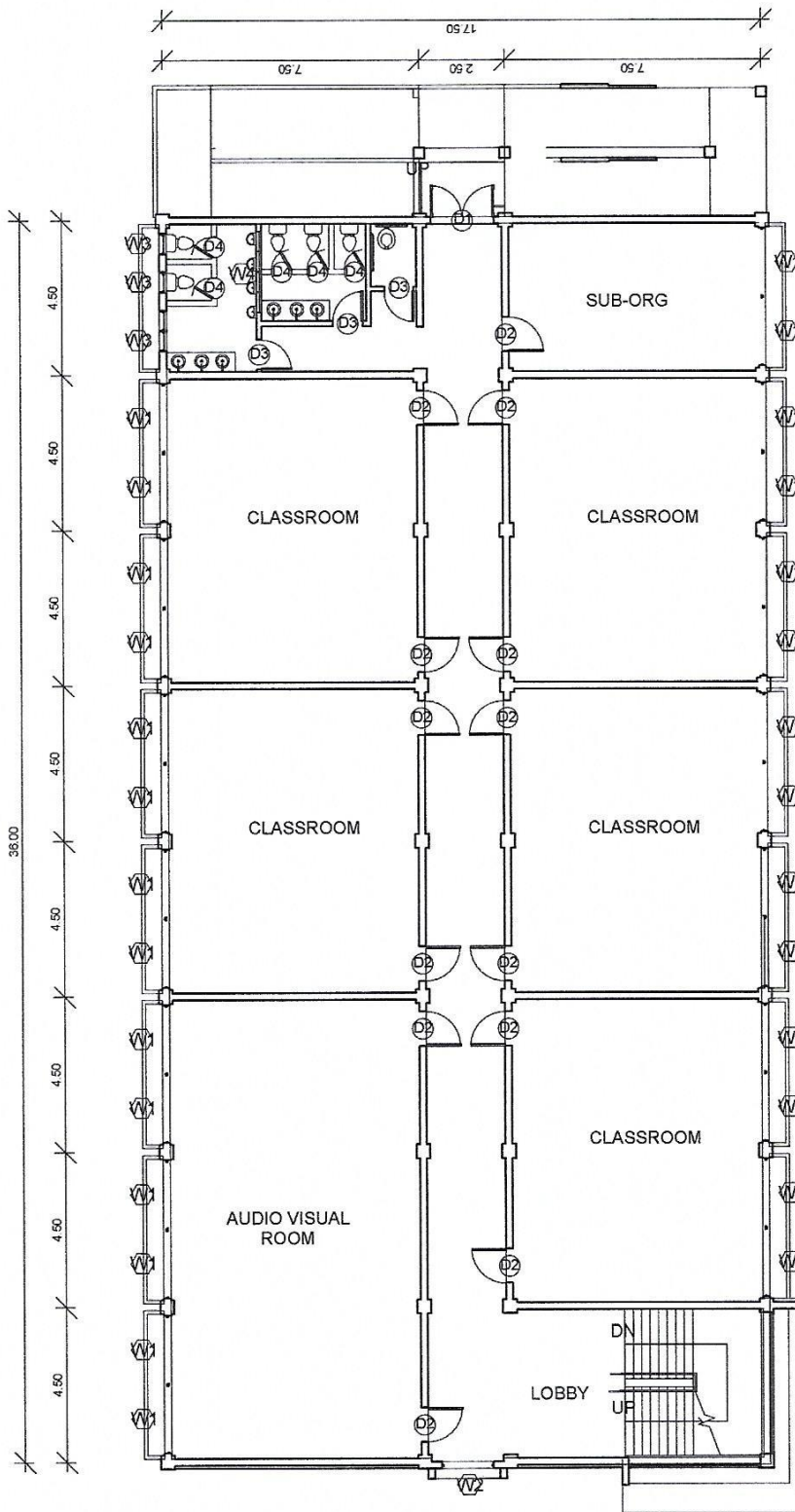




SECOND FLOOR PLAN
 FLOOR AREA: 640.00 m²
 NTS

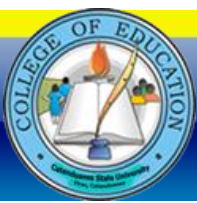
| | |
|---------------------------|---|
| Project title / Location: | CICT BUILDING CSU, Main Campus, Virac, Catanduanes |
| Prepared by: | GERALD C. MOLINA Member, TPC ENGR. CLARK RICHARD R. UCHI Member, TPC |
| Checked by: | ENGR. JERILEE G. TADAY Chairman, TPC Director, PDSS |
| Recommending Approval: | MA. THERESA E. SARMIENTO, MBA VP, ADMINISTRATIVE AND FINANCIAL AFFAIRS |
| Approved: | MINERVA I. MORALES, Ed. D. SIC President III |





THIRD FLOOR PLAN
FLOOR AREA: 640.00 m²
 NTS

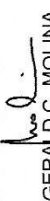

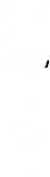


| | | | |
|---------------------------|--|------------------------|---|
| Project title / Location: | CICT BUILDING CSU, Main Campus, Virac, Catanduanes | Prepared by: | GERALD C. MOLINA Member, TPC ENGR. CLARK RICHARD R. UCHI Member, TPC |
| Checked by: | ENGR. JERILEE G. TADOY Chairman, TPC, Director, PDSS | Recommending Approval: | MA. THERESA E. SARMIENTO, MBA VP, ADMINISTRATIVE AND FINANCIAL AFFAIRS |
| Approved: | | | MINERVA I. MORALES, Ed. D. SFC President III |

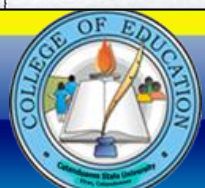


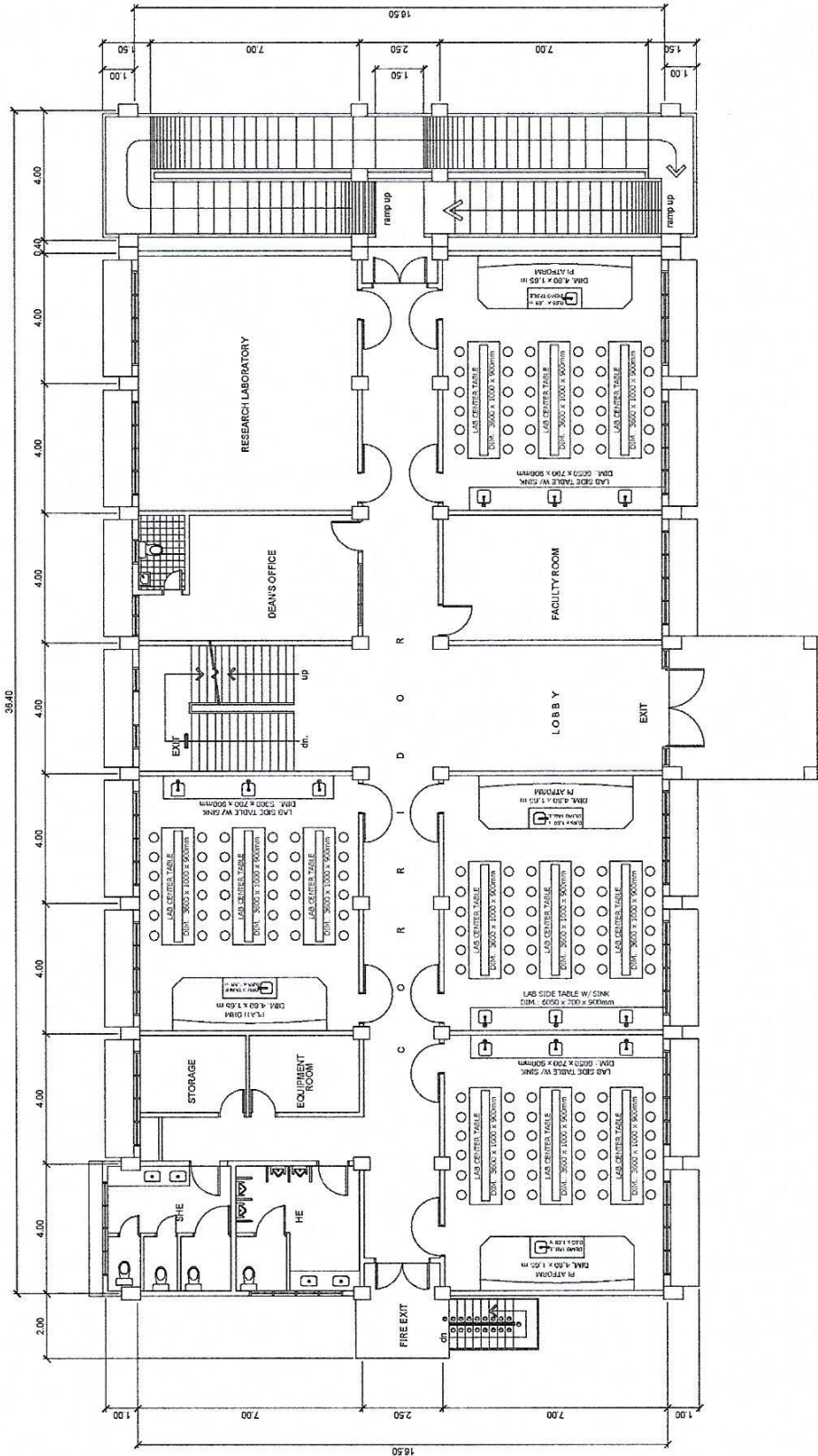


PERSPECTIVE

○ NOT TO SCALE

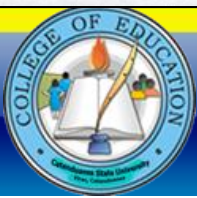
| | | | | | | | | | |
|---------------------------|---|--------------|---|-------------|--|------------------------|---|-----------|--|
| Project title / Location: | SCIENCE LABORATORY BUILDING <small>CSJU, Main Campus, Virac, Catanduanes</small> | Prepared by: |  GERALD C. MOLINA <small>Member, TPC</small>  ENGR. CLARK RICHARD R. UCHI <small>Member, TPC</small> | Checked by: |  ENGR. JERILJEE G. TADOY <small>Chairman, TPC, Director, PDSS</small> | Recommending Approval: |  MA. THERESA E. SARMIENTO, MBA <small>VP, ADMINISTRATIVE AND FINANCIAL AFFAIRS</small> | Approved: |  MINERVA I. MORALES, Ed. D. <small>SIC, President III</small> |
|---------------------------|---|--------------|---|-------------|--|------------------------|---|-----------|--|

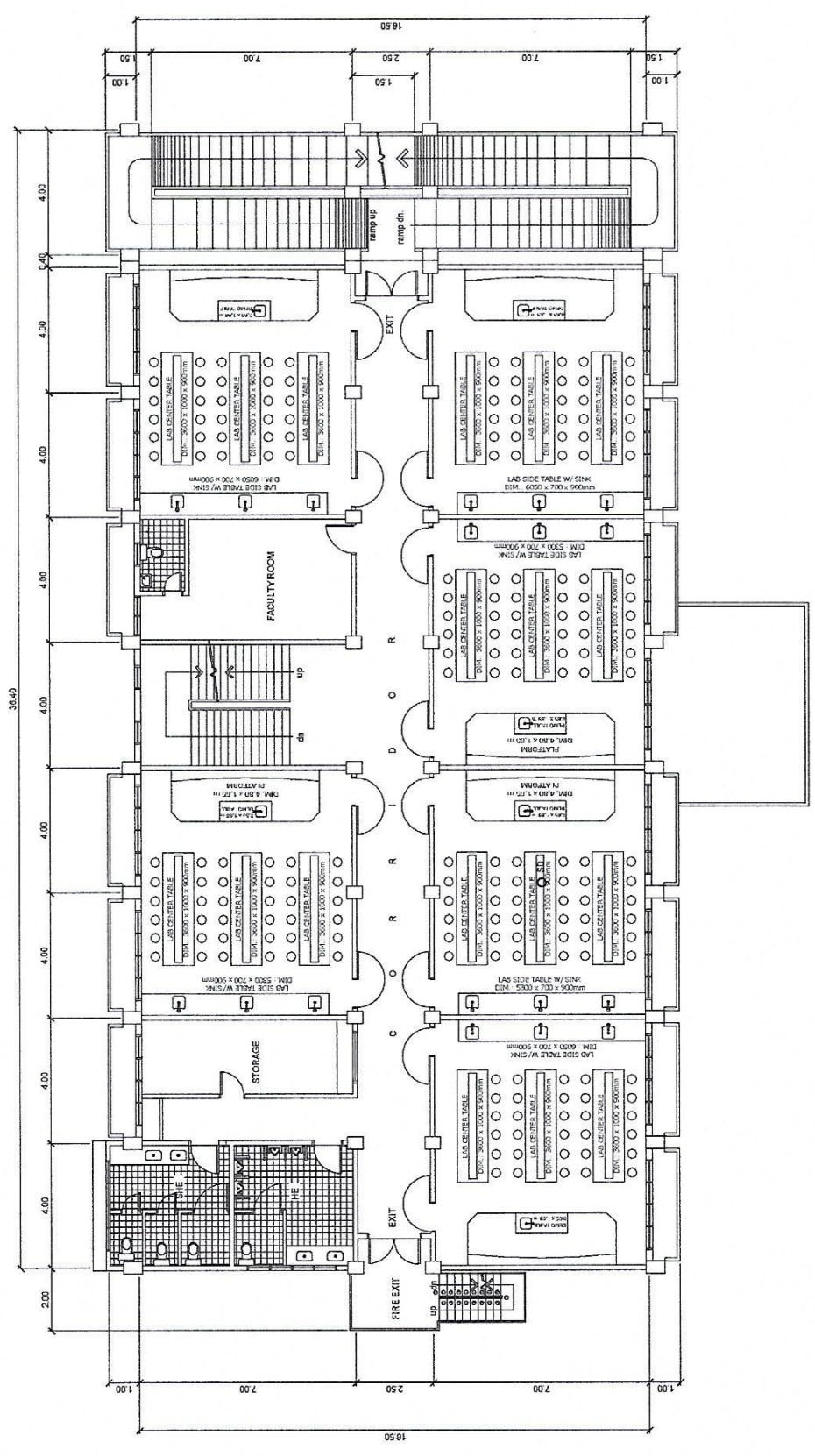




GROUND FLOOR PLAN
 SCALE: 1:175 MTRS.

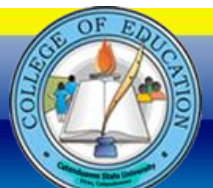
| | | | | | |
|---------------------------|---|------------------------|---|-------------|---|
| Project title / Location: | SCIENCE LABORATORY BUILDING CSU, Main Campus, Virac, Catanduanes | Prepared by: | GERALD C. MOLINA Member, TPC ENGR. CLARK RICHARD R. UCHI Member, TPC | Checked by: | ENGR. JERILEE G. TADOY Chairman, TPC Director, POISS |
| Approved: | MA. THERESA E. SARMIENTO, MBA VP, ADMINISTRATIVE AND FINANCIAL AFFAIRS | Recommending Approval: | MINERVA I. MORALES, Ed. D. SIC-President III | | |

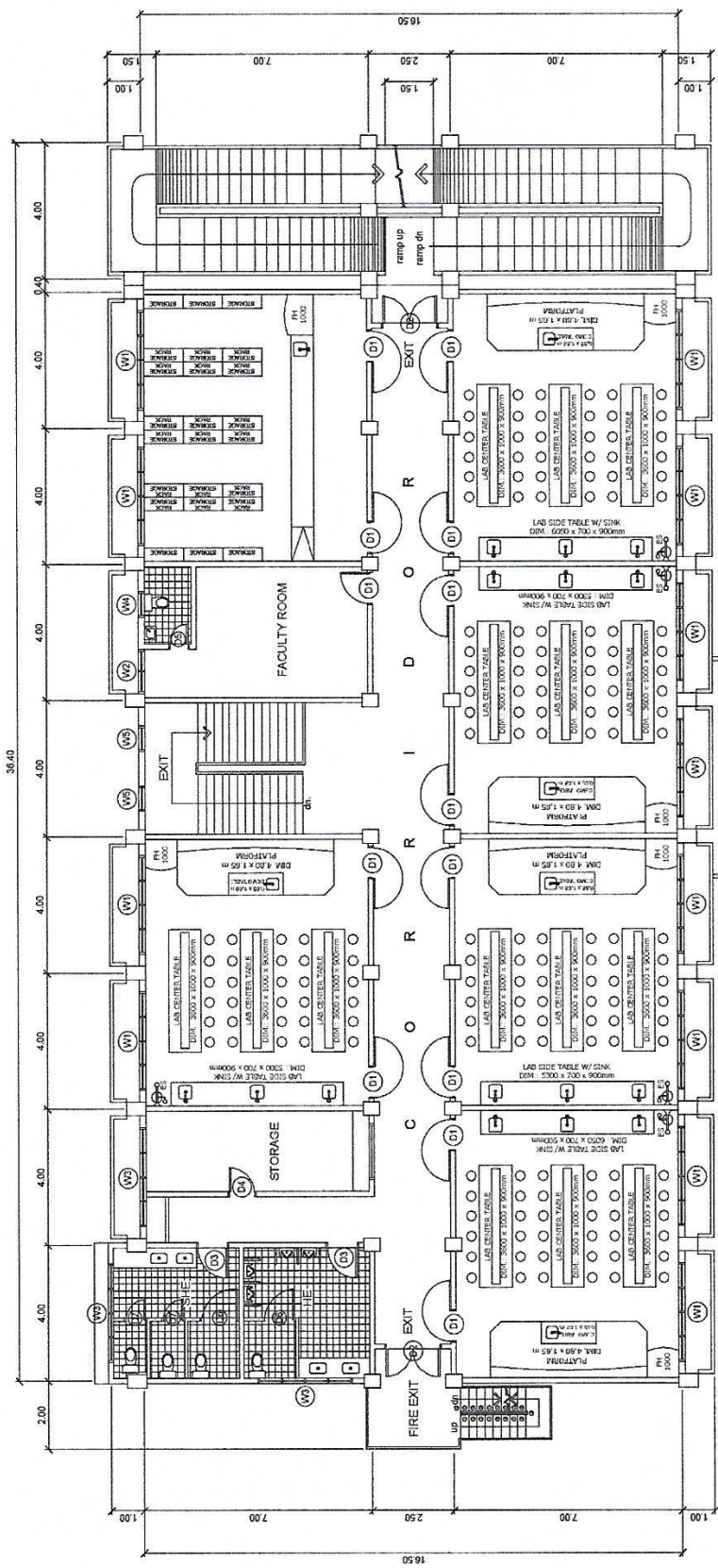




SECOND FLOOR PLAN
 SCALE: 1:175 MTRS.

| | |
|---------------------------|---|
| Project title / Location: | SCIENCE LABORATORY BUILDING CSU, Main Campus, Virac, Catanduanes |
| Prepared by: | GERALD C. MOLINA Member, TPC ENGR. CLARK RICHARD R. UCHI Member, TPC |
| Checked by: | ENGR. JERILIFE G. TADOY Chairman, TPC Director, POISS |
| Recommending Approval: | MA. THERESA E. SARMIENTO, MBA VP, ADMINISTRATIVE AND FINANCIAL AFFAIRS |
| Approved: | MINERVA I. MORALES, Ed. D. SJC President III |

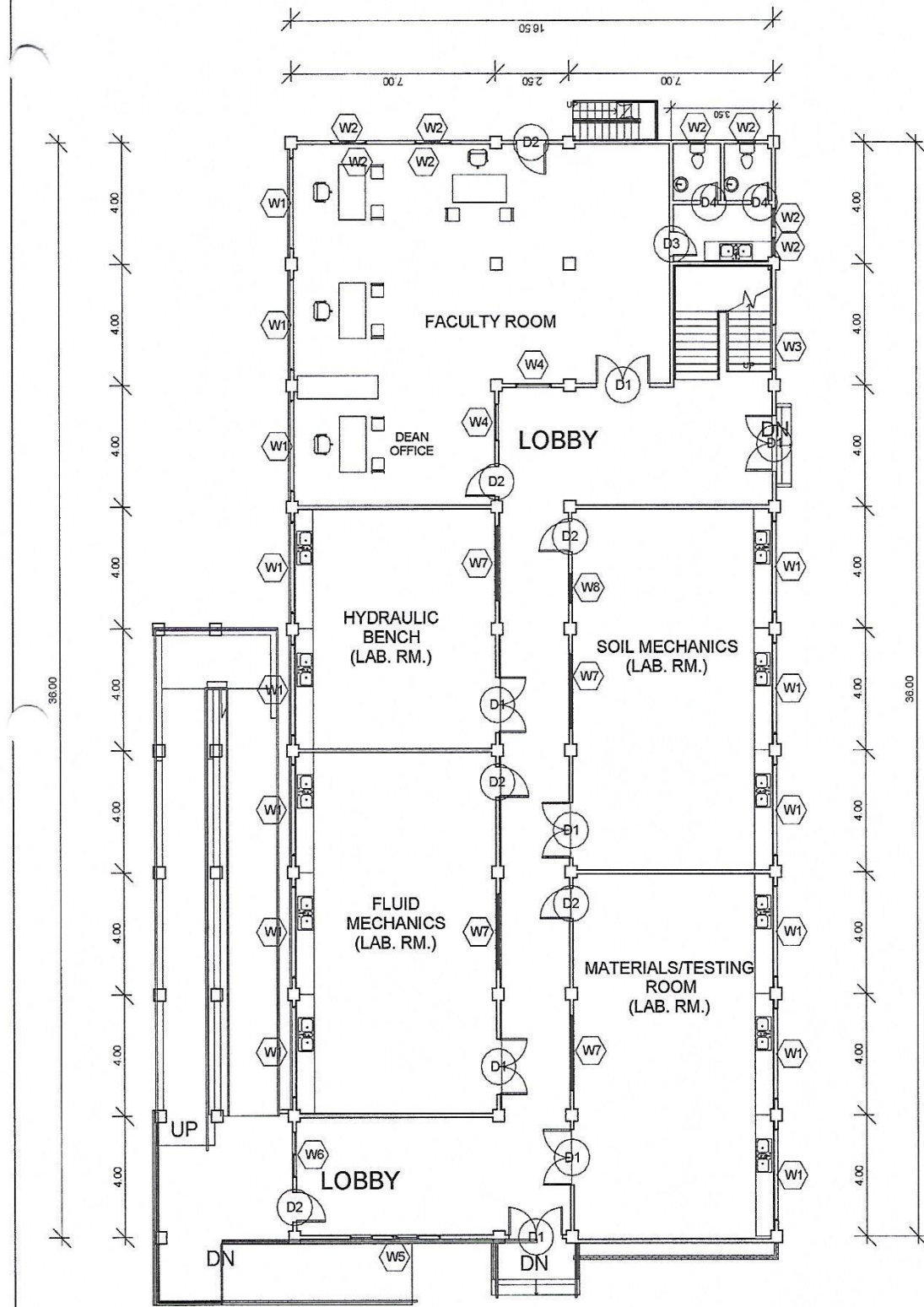




THIRD FLOOR PLAN
 SCALE: 1:175 METERS

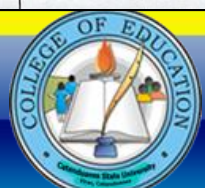
| | | | | | |
|---------------------------|--|------------------------|---|-------------|--|
| Project title / Location: | SCIENCE LABORATORY BUILDING CSU, Main Campus, Virac, Catanduanes | Prepared by: | GERALD C. MOLINA Member, TPC ENGR. CLARK RICHARD R. UCHI Member, TPC | Checked by: | ENGR. JERILEE G. TADOY Chairman, TPC/Director, PDSS |
| Approved: | MA. THERESA E. SARMENTO, MBA VP, ADMINISTRATIVE AND FINANCIAL AFFAIRS | Recommending Approval: | MINERVA I. MORALES, Ed. D. SPC President III | | |

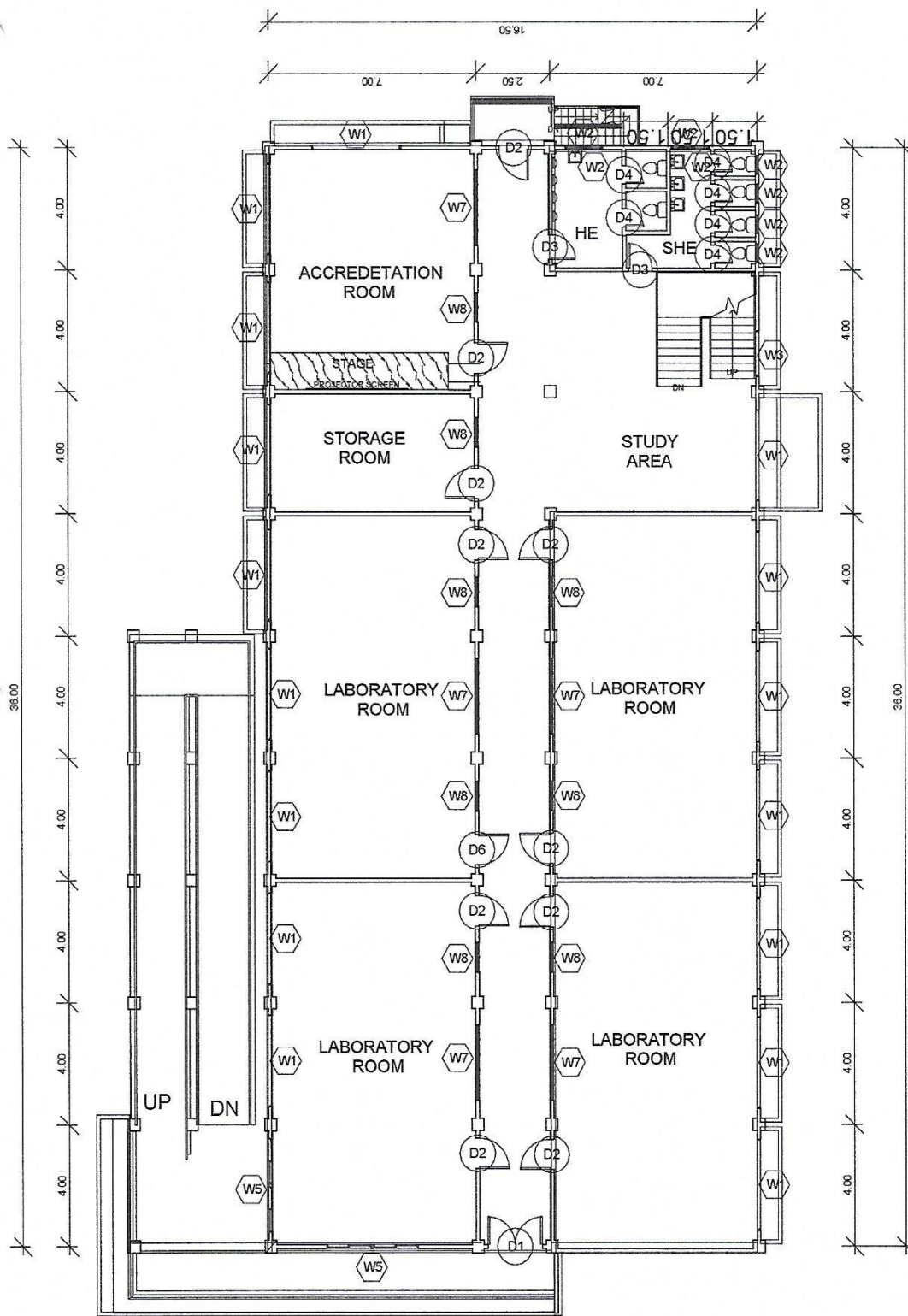




GROUND FLOOR PLAN
 FLOOR AREA: 621.00 m²
 NTS

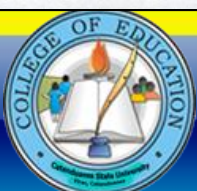
| | |
|---------------------------|---|
| Project title / Location: | ENGINEERING LABORATORY BUILDING <small>CSU, Main Campus, Virac, Catanduanes</small> |
| Prepared by: | GERALD C. MOLINA <small>Member, TPC</small> ENGR. CLARK RICHARD R. UCHI <small>Member, TPC</small> |
| Checked by: | ENGR. JERILFE G. TADOY <small>Chairman, TPC Director, PD/SS</small> |
| Recommending Approval: | MA. THERESA E. SARMIENTO, MBA <small>VP, ADMINISTRATIVE AND FINANCIAL AFFAIRS</small> |
| Approved: | MINERVA I. MORALES, Ed. D. <small>SJC President III</small> |

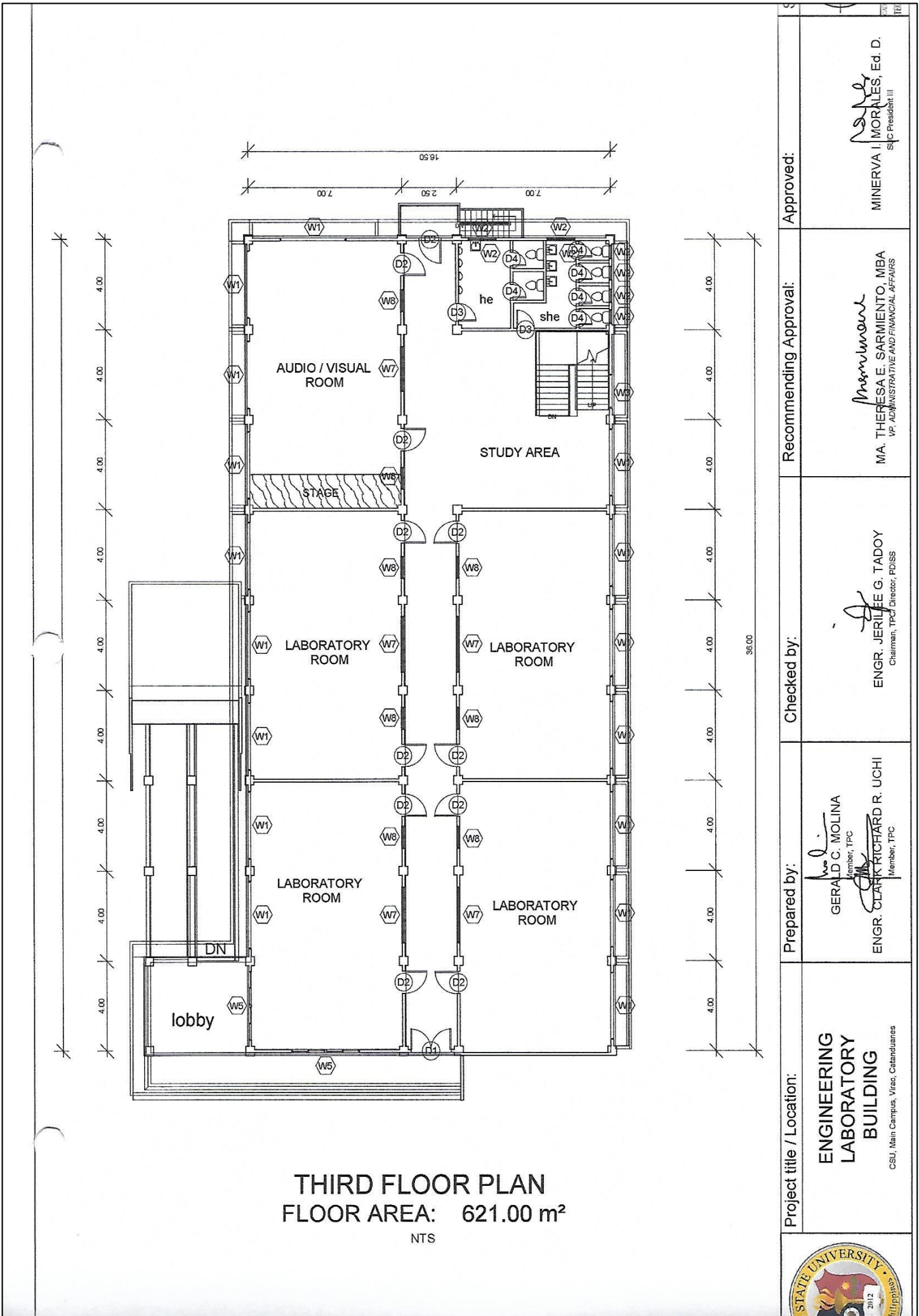




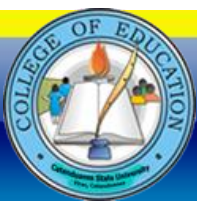
SECOND FLOOR PLAN
 FLOOR AREA: 621.00 m²
 NTS

| | | | |
|---------------------------|---|-------------|---|
| Project title / Location: | ENGINEERING LABORATORY BUILDING <small>CSU, Main Campus, Virac, Catanduanes</small> | | |
| Prepared by: | GERALD C. MOLINA <small>Member, TPC</small> ENGR. CLARK RICHARD R. UCHI <small>Member, TPC</small> | Checked by: | ENGR. JERILFE G. TADOY <small>Chairman, TPC Director, PDSS</small> |
| Recommending Approval: | MA. THERESA E. SARMIENTO, MBA <small>VP, ADMINISTRATIVE AND FINANCIAL AFFAIRS</small> | Approved: | MINERVA I. MORALES, Ed. D. <small>SFC President III</small> |






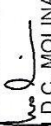
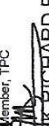

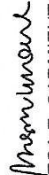

| | | | | |
|--|---|---|--|--|
| Project title / Location: ENGINEERING LABORATORY BUILDING <small>CSU, Main Campus, Virac, Catanduanes</small> | Prepared by: GERALD C. MOLINA <small>Member, TPC</small> ENGR. CLARK RICHARD R. UCHI <small>Member, TPC</small> | Checked by: ENGR. JERILIFE G. TADOY <small>Chairman, TPC / Director, PD/ISS</small> | Recommending Approval: MA. THERESA E. SARMIENTO, MBA <small>VP, ADMINISTRATIVE AND FINANCIAL AFFAIRS</small> | Approved: MINERVA I. MORALES, Ed. D. <small>SUPC President III</small> |
|--|---|---|--|--|





PERSPECTIVE

NOT TO SCALE

| | | | | | |
|---|---|--|---|---|---|
|  | Project title / Location: COLLEGE OF EDUCATION (LHS) BUILDING <small>CSU, Main Campus, Virac, Catanduanes</small> | Prepared by:  <small>GERALD C. MOLINA Member, TPC</small>  <small>ENGR. CLARK RICHARD R. UCHI Member, TPC</small> | Checked by:  <small>ENGR. JERILIFE G. TADOY Chairman, TPC Director, PDISS</small> | Recommending Approval:  <small>MA. THERESA E. SARMIENTO, MBA VP, ADMINISTRATIVE AND FINANCIAL AFFAIRS</small> | Approved:  <small>MINERVA I. MORALES, Ed. D. SPIC President III</small> |
|---|---|--|---|---|---|





Republic of the Philippines

CATANDUANES STATE UNIVERSITY

Virac, Catanduanes

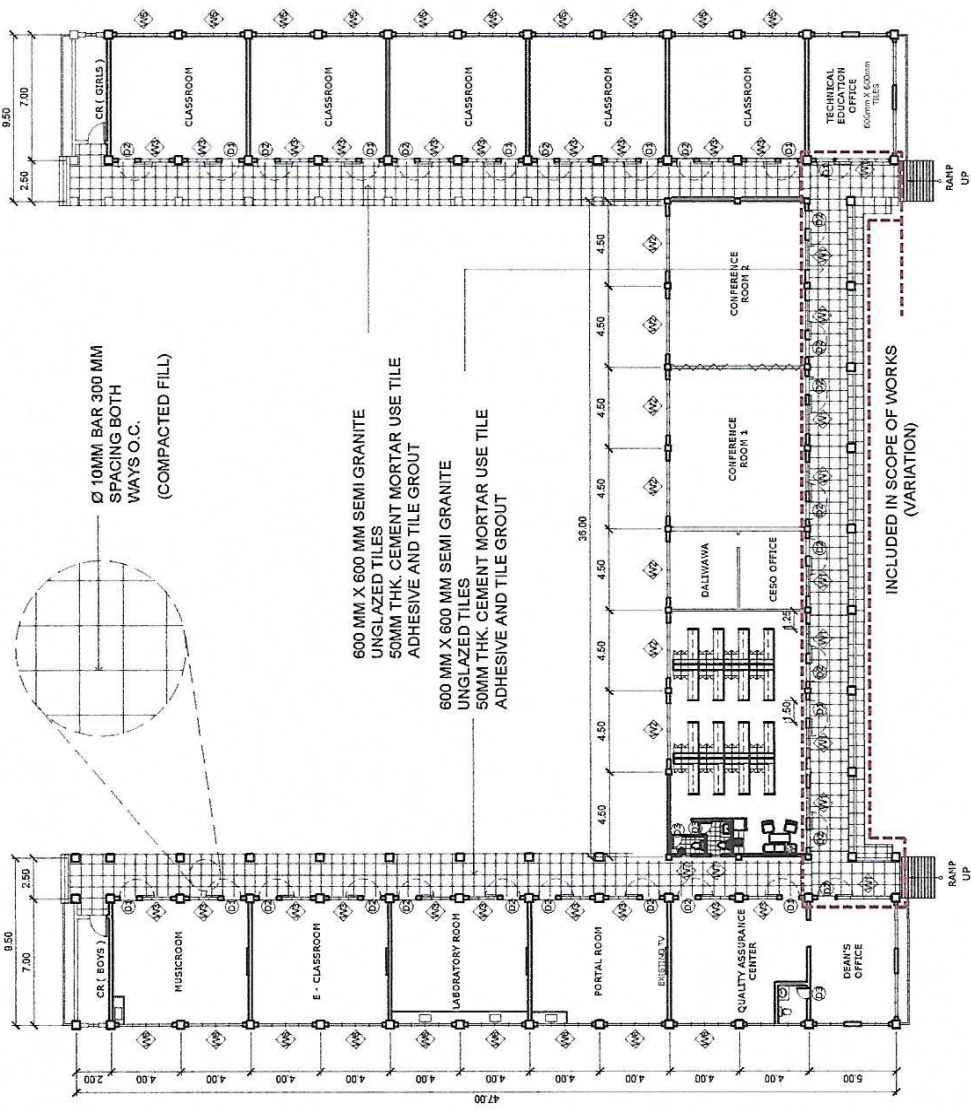


Management
System
ISO 9001:2015

www.tuv.com
ID 9108633846



“Leading to mold tomorrow’s noblest”



NOTE: PAINTING WORKS OF ALL INTERIOR SURFACES MAY IT BE CONCRETE, WOOD OR METAL IS INCLUDED IN THE SCOPE OF WORK. REPAINTING OF EXISTING STEEL CASEMENT WINDOWS AND WINDOW GRILLS IS ALSO INCLUDED

Ø 10MM BAR 300 MM SPACING BOTH WAYS O.C. (COMPACTED FILL)

600 MM X 600 MM SEMI GRANITE UNGLAZED TILES 50MM THK. CEMENT MORTAR USE TILE ADHESIVE AND TILE GROUT

600 MM X 600 MM SEMI GRANITE UNGLAZED TILES 50MM THK. CEMENT MORTAR USE TILE ADHESIVE AND TILE GROUT

FLOOR PLAN (FLOOR AREA: 1328.00m²)
 SCALE: 1:200 MTRS.

| | | | | | | | | | | | |
|---------------------------|---|--------------|---|-------------|---|------------------------|---|-----------|---|-----|------------------|
| Project title / Location: | COLLEGE OF EDUCATION (LHS) BUILDING CSU, Main Campus, Virac, Catanduanes | Prepared by: | GERALD C. MOLINA Member, TPC ENGR. CLARK RICHARD R. UCHI Member, TPC | Checked by: | ENGR. JERILFE G. TADOY Chairman, TPC, Director, PDSS | Recommending Approval: | MA. THERESA E. SARMIENTO, MBA VP, ADMINISTRATIVE AND FINANCIAL AFFAIRS | Approved: | MINERVA I. MORALES, Ed. D. SJC President III | Shc | 2020 BY TECHNICA |
|---------------------------|---|--------------|---|-------------|---|------------------------|---|-----------|---|-----|------------------|

