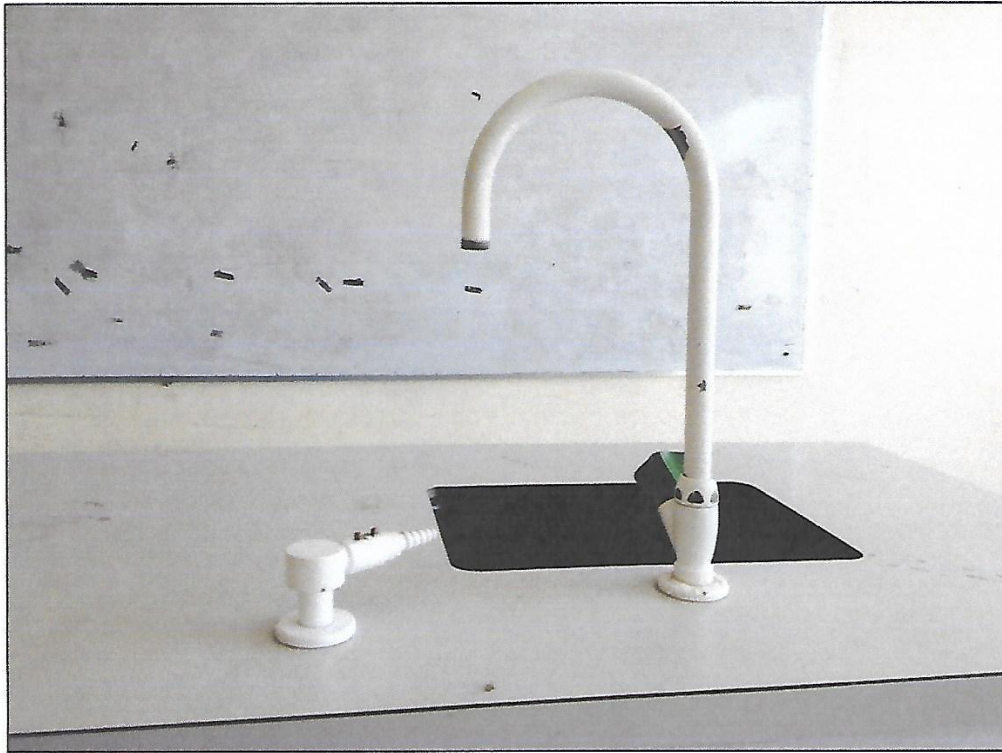


I.10 Gas, water and electricity are utilized for class practicum activities

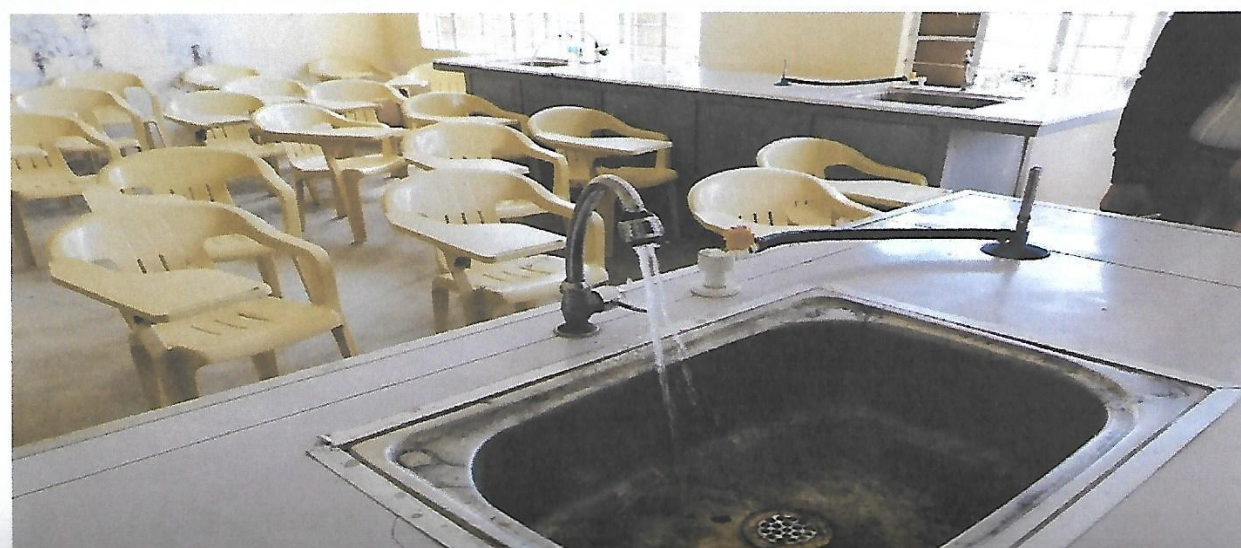
Water Outlets and Gas Outlets

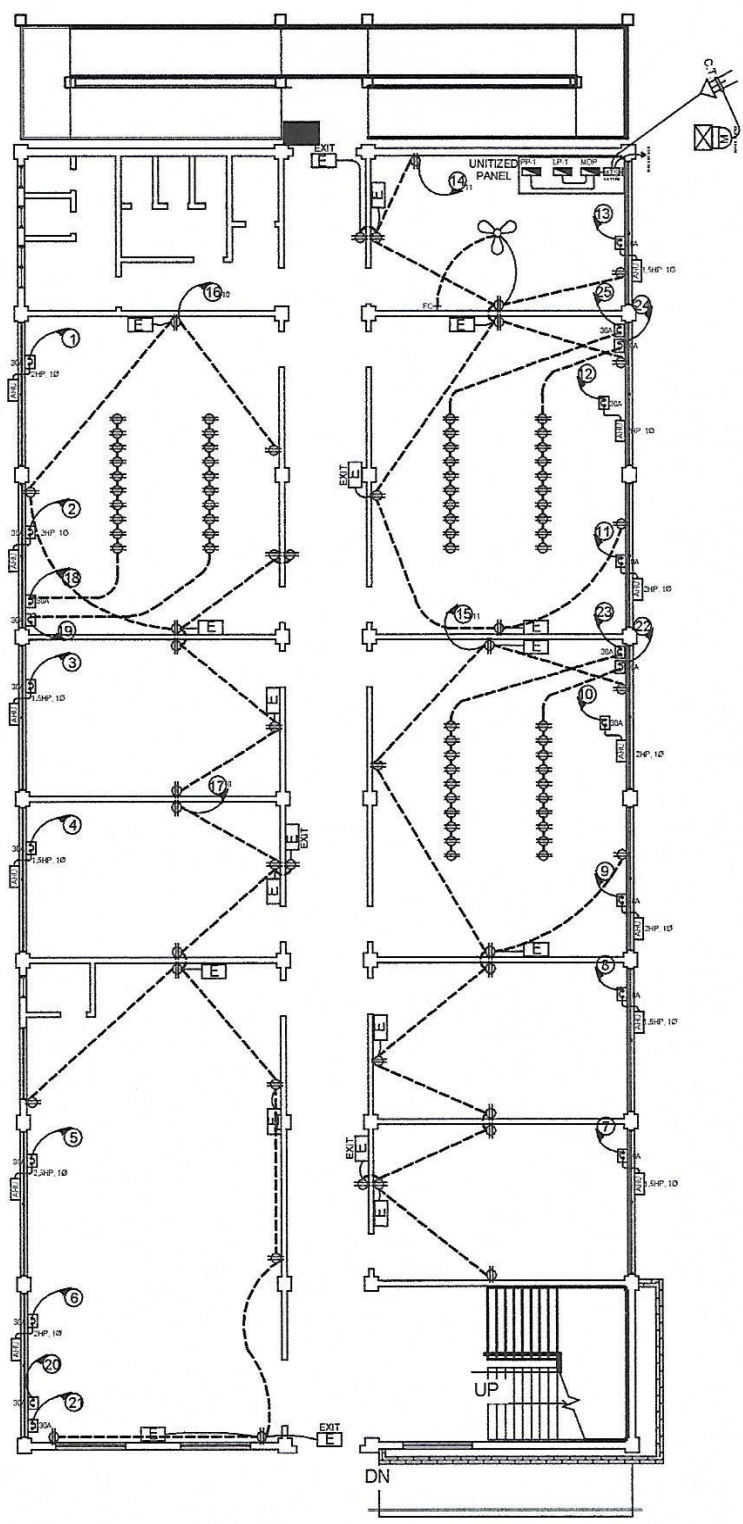


Water Outlets and Gas Outlets



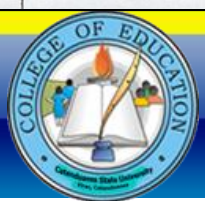
Evidence on the availability of gas, water and electricity for practicum purposes.

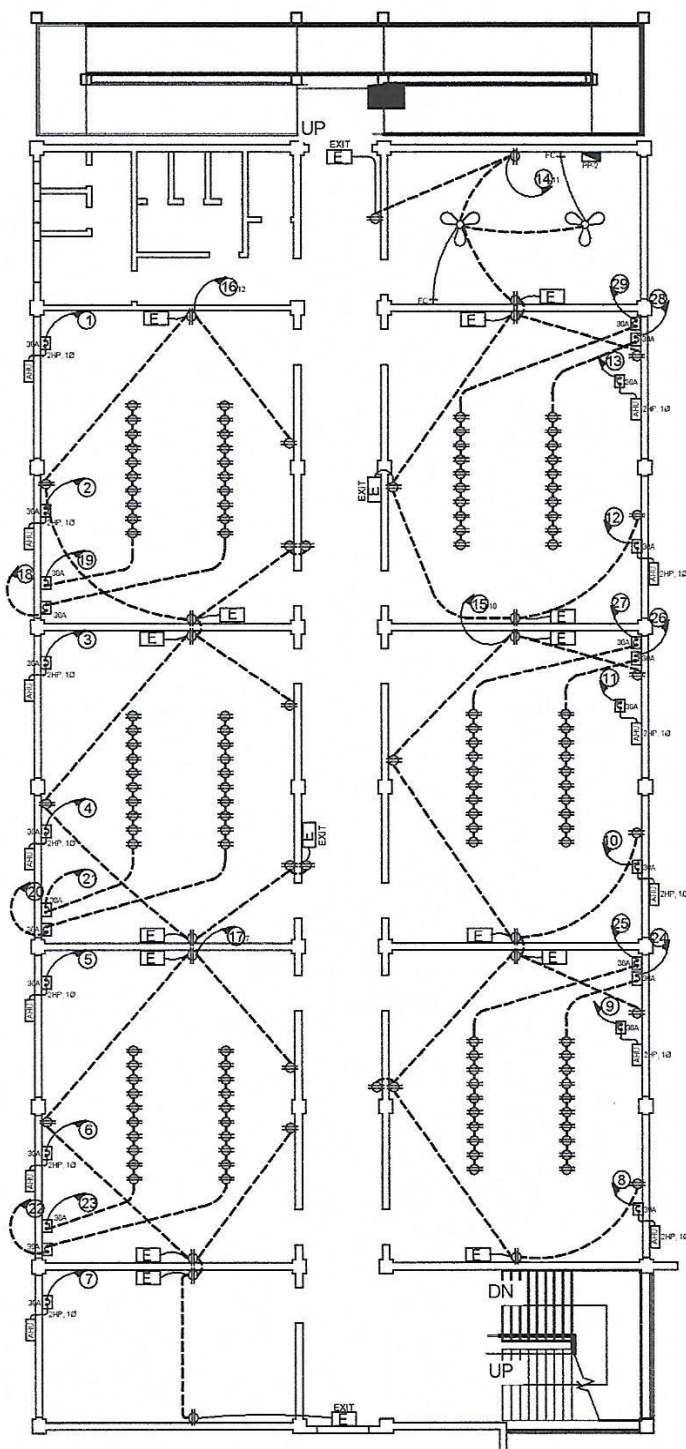




GROUND FLOOR PLAN POWER LAYOUT
 FLOOR AREA: 640.00 m²
 SCALE 1:100 MTRS

Project title / Location:	CICT BUILDING CSU, Main Campus, Virac, Catanduanes	Prepared by:	GERALD C. MOLINA Member, TPC ENGR. CLARK RICHARD R. UCHI Member, TPC	Checked by:	ENGR. JERILEE G. TADOY Chairman, TPC Director, PDISS	Recommending Approval:	MA. THERESA E. SARMIENTO, MBA VP, ADMINISTRATIVE AND FINANCIAL AFFAIRS	Approved:	MINERVA I. MORALES, Ed. D. SUC President III	Sheet	1
---------------------------	---	--------------	---	-------------	---	------------------------	---	-----------	---	-------	---





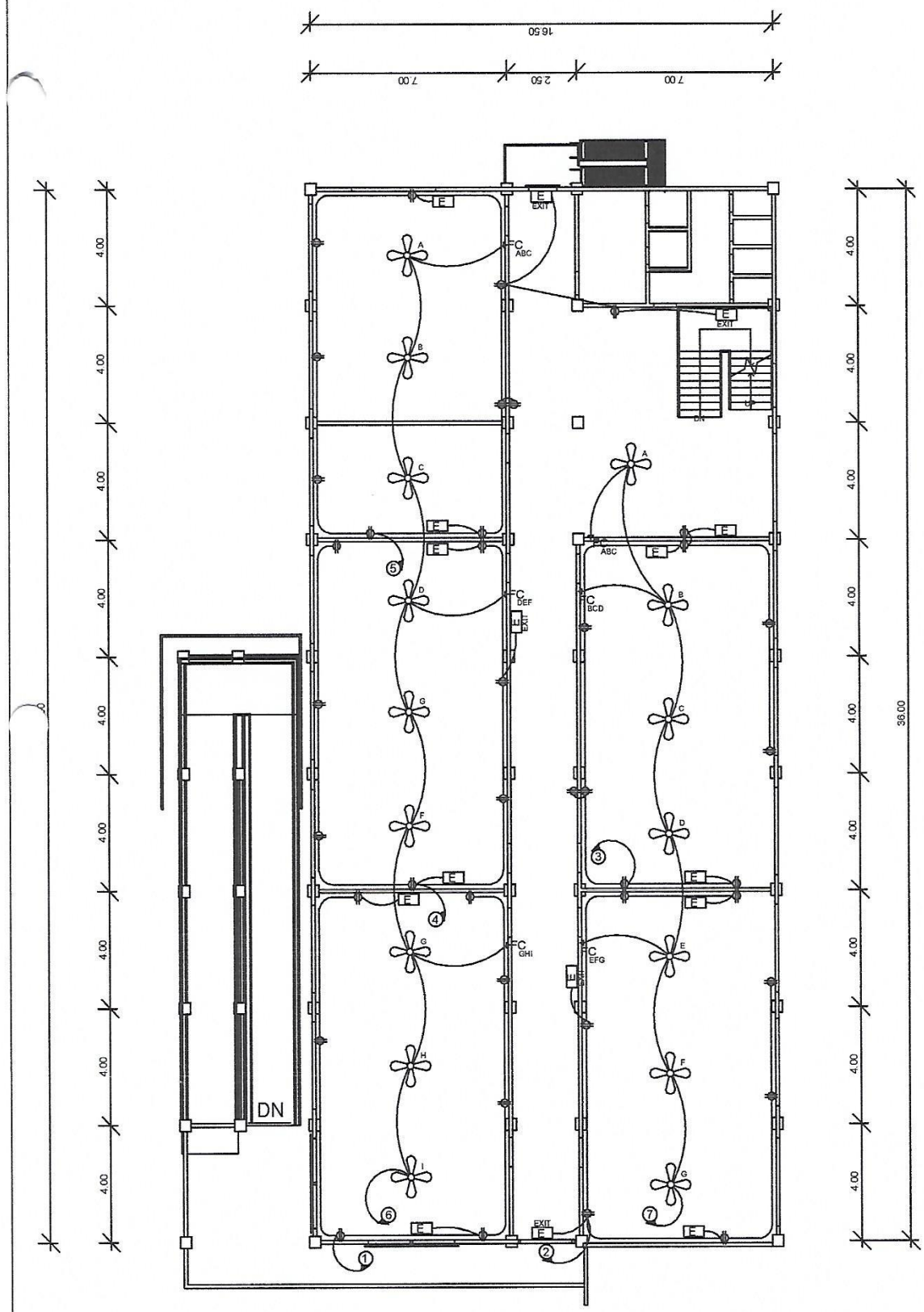
SECOND FLOOR PLAN POWER LAYOUT

FLOOR AREA: 640.00 m²

SCALE 1:100 MTRS

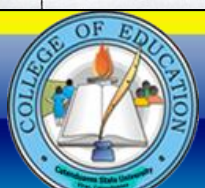
Project title / Location:	CICT BUILDING CSU, Main Campus, Virac, Catanduanes	
Prepared by:	GERALD C. MOLINA Member, TPC ENGR. CLARK RICHARD R. UCHI Member, TPC	
Checked by:	ENGR. JERILÉE G. TADÓY Chairman, TPC/Director, POISS	
Recommending Approval:	MA. THERESA E. SARMIENTO MBA VP, ADMINISTRATIVE AND FINANCIAL AFFAIRS	
Approved:	MINERVA I. MORALES, Ed. D. SUC President III	

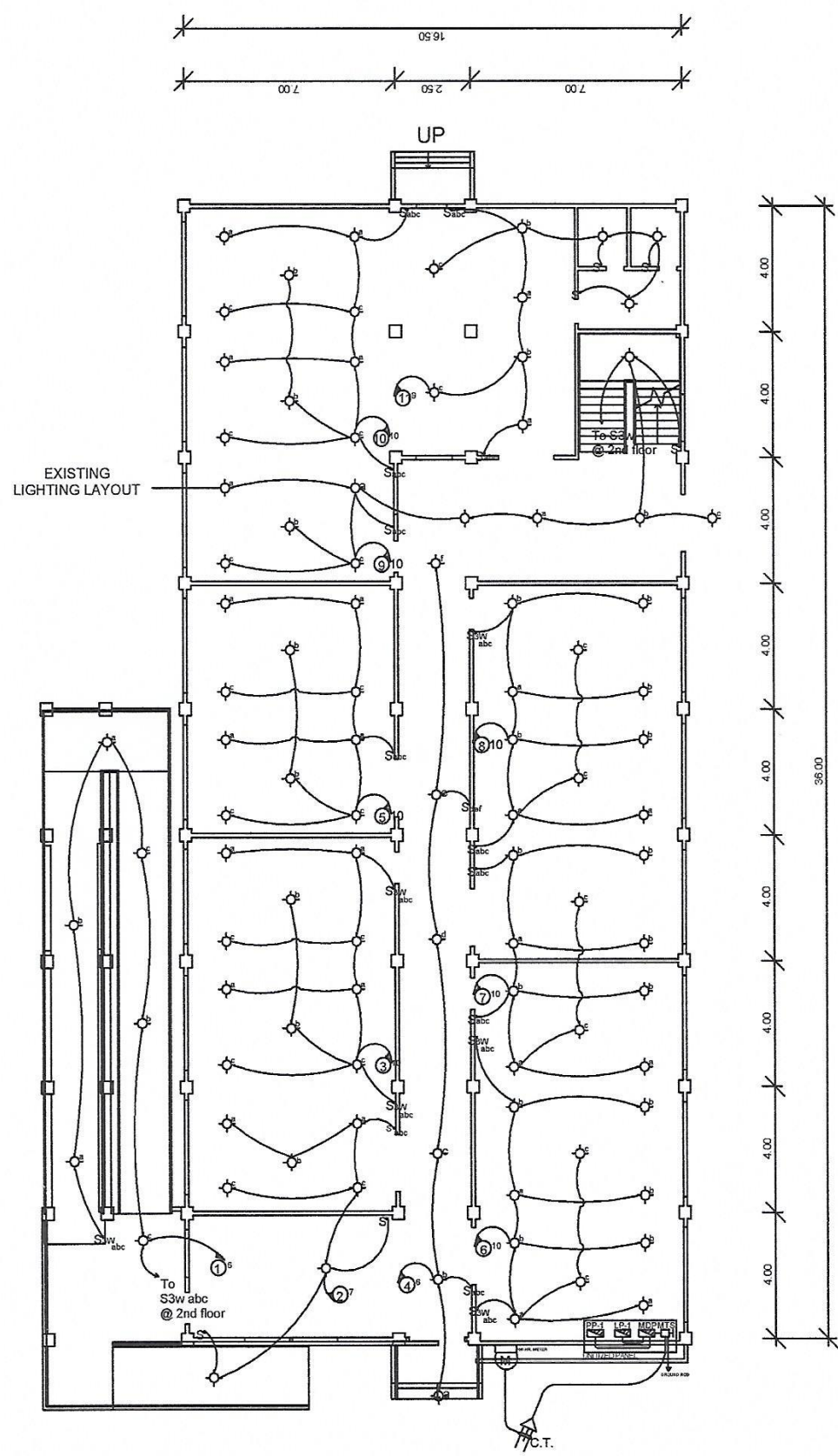




THIRD FLOOR POWER LAYOUT
 FLOOR AREA: 621.00 m²
 NTS

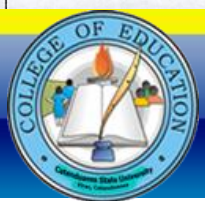
Project title / Location:	ENGINEERING LABORATORY BUILDING <small>CSU, Main Campus, Virac, Catanduanes</small>		
Prepared by:	GERALD C. MOLINA <small>Member, TPC</small> ENGR. CLARK RICHARD R. UCHI <small>Member, TPC</small>	Checked by:	ENGR. JERILÉE G. TADOY <small>Chairman, TPC/Director, PDISS</small>
Recommending Approval:	MA. THERESA E. SARMIENTO, MBA <small>VP, ADMINISTRATIVE AND FINANCIAL AFFAIRS</small>	Approved:	MINERVA I. MORALES, Ed. D. <small>SUC President III</small>

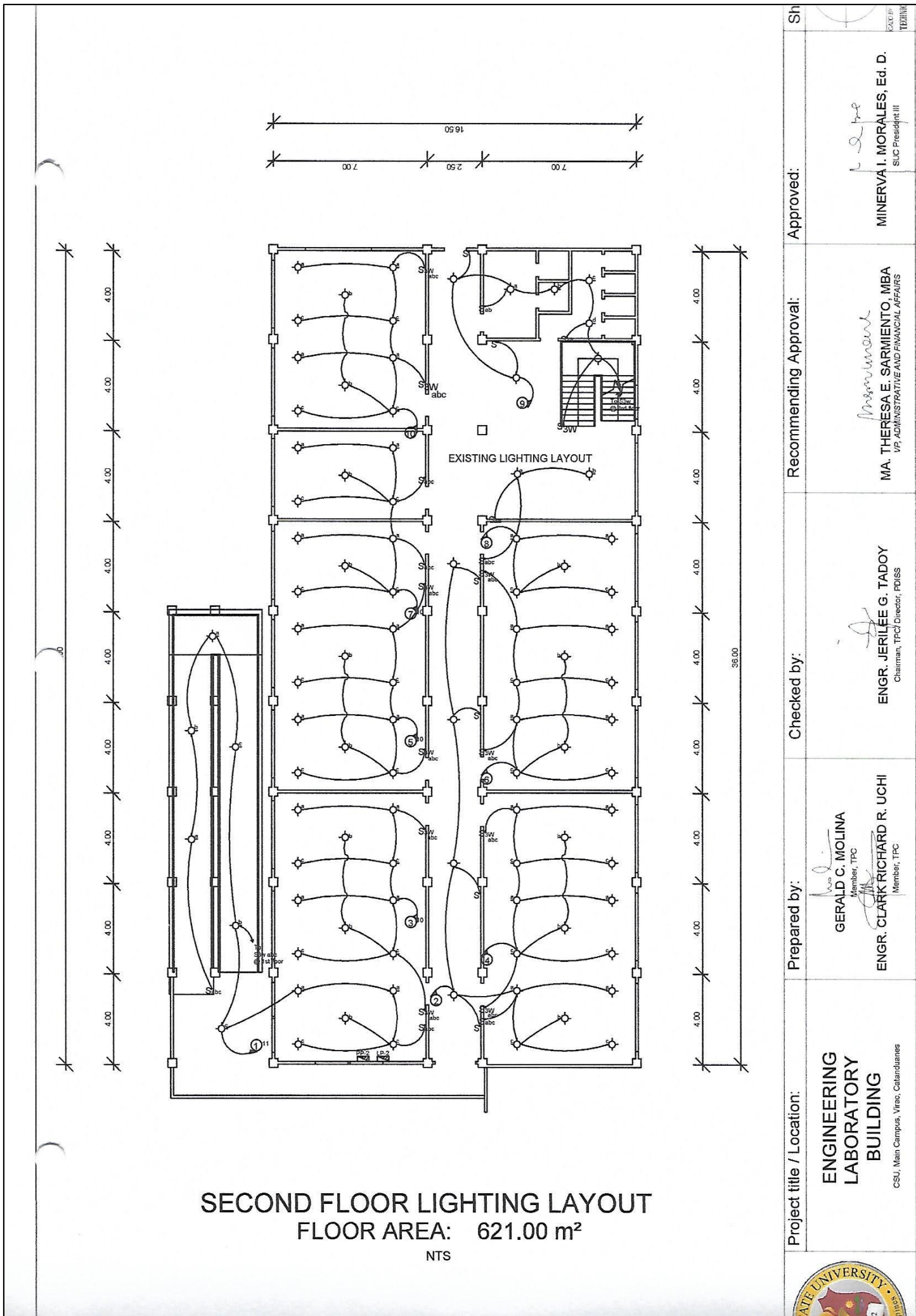




GROUND FLOOR LIGHTING LAYOUT
 FLOOR AREA: 621.00 m²
 NTS

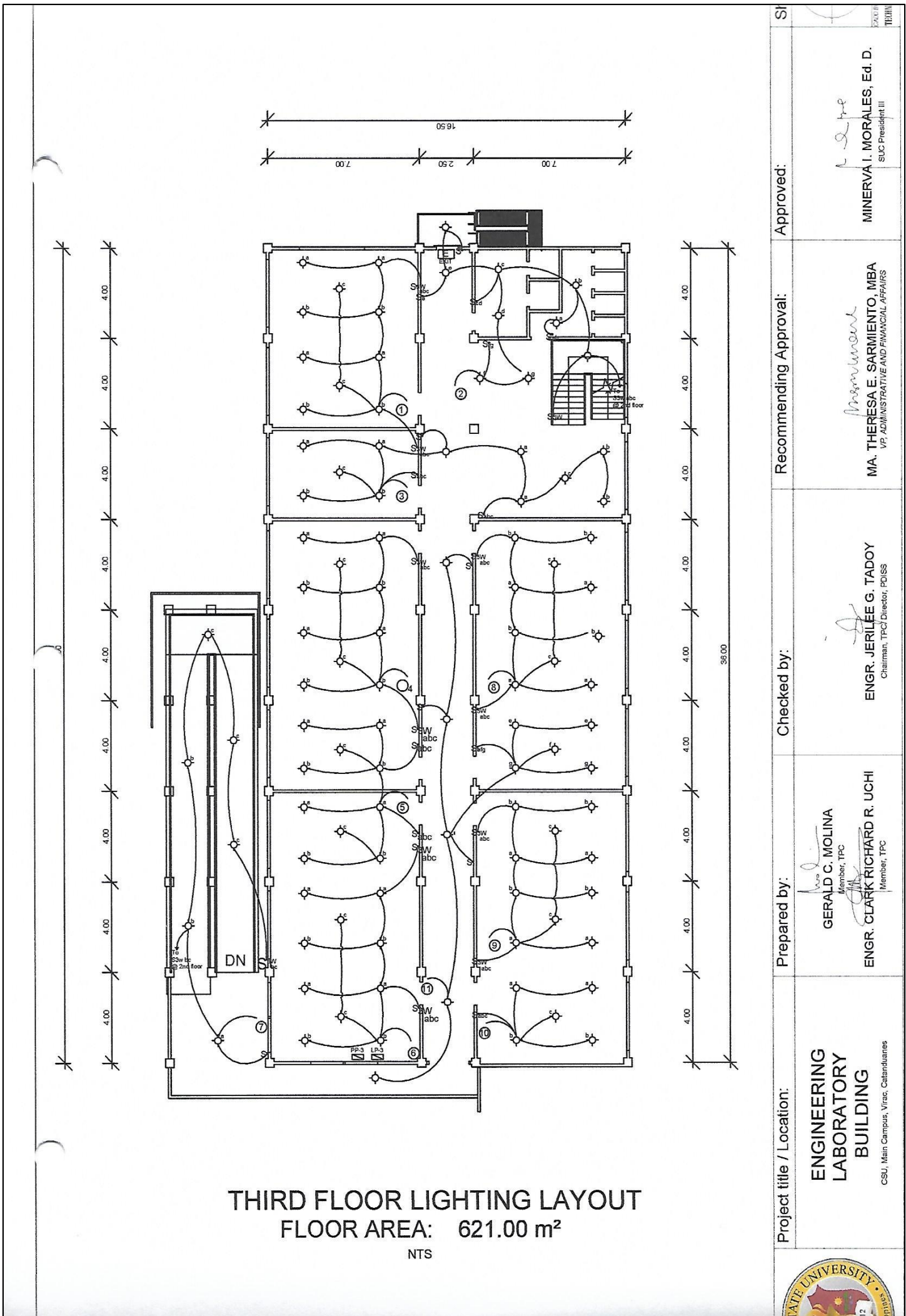
Project title / Location:	ENGINEERING LABORATORY BUILDING <small>CSU, Main Campus, Virac, Catanduanes</small>		
Prepared by:	GERALD C. MOLINA <small>Member, TPC</small> ENGR. CLARK RICHARD R. UCHI <small>Member, TPC</small>	Checked by:	ENGR. JERILÉE G. TADOY <small>Chairman, TPC/ Director, PDSS</small>
Recommending Approval:	MA. THERESA E. SARMIENTO, MBA <small>VP, ADMINISTRATIVE AND FINANCIAL AFFAIRS</small>	Approved:	MINERVA I. MORALES, Ed. D. <small>SLC President III</small>





Project title / Location:	ENGINEERING LABORATORY BUILDING CSU, Main Campus, Virac, Catanduanes	Checked by:	ENGR. JERILÉE G. TADOY Chairman, TPC/Director, PDSS	Approved:	MINERVA I. MORALES, Ed. D. SUC President III
Prepared by:	GERALD C. MOLINA Member, TPC ENGR. CLARK RICHARD R. UCHI Member, TPC	Recommending Approval:	MA. THERESA E. SARMIENTO MBA VP, ADMINISTRATIVE AND FINANCIAL AFFAIRS		





Project title / Location:	ENGINEERING LABORATORY BUILDING CSU, Main Campus, Virac, Catanduanes	Prepared by:	GERALD C. MOLINA Member, TPC ENGR. CLARK RICHARD R. UCHI Member, TPC	Checked by:	ENGR. JERILIEE G. TADOY Chairman, TPC Director, POISS	Recommending Approval:	MA. THERESA E. SARMIENTO, MBA VP, ADMINISTRATIVE AND FINANCIAL AFFAIRS	Approved:	MINERVA I. MORALES, Ed. D. SUC President III
---------------------------	---	--------------	---	-------------	--	------------------------	---	-----------	---

